



1985 Atlantic Motoryacht

Boat Type: Motor Yacht

Address: Kent Narrows / Chester, MD, US

Price: \$59,900



OVERVIEW

This big beamy(16'39") US built, Hargrave design is a comfortable cruising yacht with 3 staterooms and three heads. Ease of docking because of the line handling deck makes the mates job so much easier. She has been kept under cover for the last 18 years. "Legacy II" is under cover at our docks in Chester Md. @ Piney Narrows Yacht Haven. Come take a look!

SPECIFICATIONS

Basic Information

Manufacturer:	Atlantic	Vessel Name:	Legacy II
Model:	Motoryacht	Boat Type:	Motor Yacht
Year:	1985	Hull Material:	Fiberglass
Category:	Power	Hull Type:	
Condition:	Used	Hull Color:	
Location:	Kent Narrows / Chester, MD, US	Designer:	Jack Hargrave
Available for sale in U.S. waters:	Yes	Flag of Registry:	

Dimensions & Weight

Length:	47 ft - 14.33 meter	Draft - max:	3 ft 9 in - 1.14 meter
LOA:	47 ft - 14.33 meter	Bridge Clearance:	18 ft - 5.49 meter
Beam:	16 ft - 4.88 meter	Dry Weight:	-

Engine

Make:	Detroit Diesel	Engine Type:	
Model:	6V71TI	Drive Type:	
Engine(s):	2	Fuel Type:	Diesel
Hours:	2400	Horsepower:	-
Cruise Speed:	-	Max Speed:	-
Range:	-	Joystick Control:	No

Tank Capacities

Fuel Tank:	-	Holding Tank:	-
Fresh Water Tank:	-		

Accommodations

Total Cabins:	-	Crew Cabins:	1
Total Berths:	-	Crew Berths:	1
Total Sleeps:	1	Crew Sleeps:	1
Total Heads:	-	Crew Heads:	1
Captains Cabin:	No		

DESCRIPTIONS

General Description

Traditional Hargrave-designed US built motoryacht delivers time-tested blend of solid construction,

spacious accommodations, and a comfortable ride.

Legacy II has the original three-cabin layout, which proved most popular.

Lower helm position was standard. Note spacious aft deck dimensions, roomy master suite. Optional hard aft enclosure turns the aft deck into a fully enclosed second salon. The 435hp GM diesels cruise at 14 to 16 knots.

Engines

Total Power: 2 x 435

Cruising Speed: 14 knots

Max Speed: 16 knots

Tanks

Holding: 40

Accommodations

Starting forward are over and under berths on starboard. Storage under and hanging locker. Head and vanity to port with shower stall to starboard. Aft of the salon is the second guest stateroom with over and under pullman that converts to settee for daytime use. Across the companionway is the head with vanity. Aft is the master with walk around Queen and much storage and hanging lockers. Ensuite head, vanity and separate shower stall.

Galley

U shaped fully equipped galley with stove oven and double door refrigerator. Plenty of storage and counter space. Dinette opposite.

Electronics

- Furuno radar
- Speco Hailer '06
- Glendenning synchronizer
- Guest searchlight w/remote '06
- Raymarine GPS & Chartplotter '06
- Simrad Robertson AP11 '03
- Sandpiper D/F, speed, log
- Standard Horizon VHF

Electrical

- 110/220v system
- 12kw Westerbeke gen set
- Bilge, smoke, and fire alarms
- 2-50' 50amp power cords
- 40 amp battery charger '04
- Battery parallel switch

- Carbon monoxide detector

Deck/Hull/Mechanical

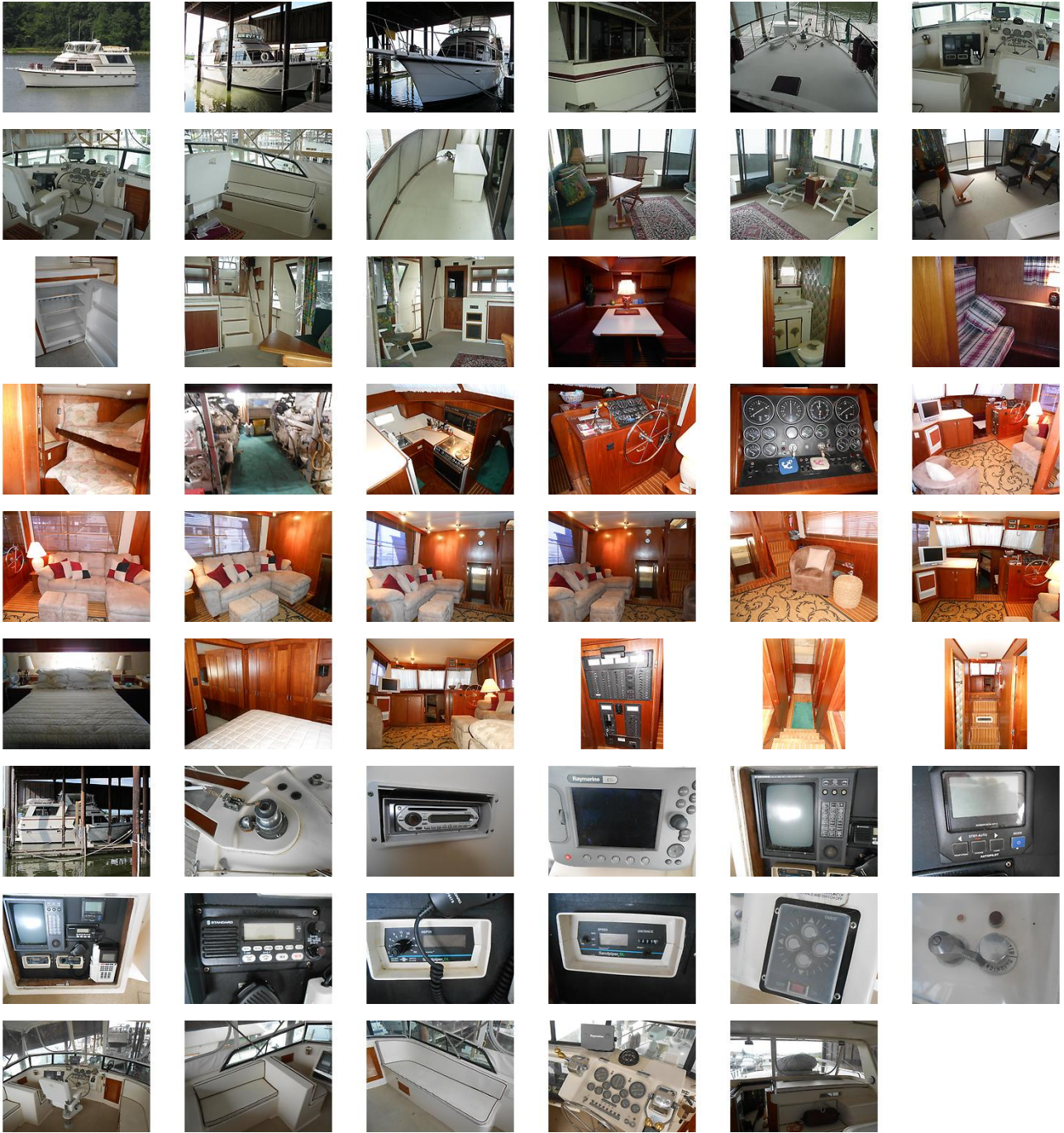
Fully enclosed Bimini with EZ2CY front panel. This was all replaced in 2004 and is in good condition. Three 16000 BTU's of AC/Heat and one 12000BTU unit for a total of 60000BTU's.

- Ideal Electric windlass w/anchor
- Swim platform w/ladder
- Tideride boarding ladder
- Fender storage racks w/fender
- Halon system
- 2 extra props
- stainless steel bow rail
- Electric dingy davit w/dingy
- Walker Air Seps
- Racor filters

Disclaimer

The Company offers the details of this vessel in good faith but cannot guarantee or warrant the accuracy of this information nor warrant the condition of the vessel. A buyer should instruct his agents, or his surveyors, to investigate such details as the buyer desires validated. This vessel is offered subject to prior sale, price change, or withdrawal without notice.

GALLERY



LOCATION MAP





ERIC HORST
Bayport Yacht Sales
323 Piney Narrows Road
Chester, MD, US
Office: (410) 643-8100
Mobile: (410) 212-5264
bayportyachts@gmail.com

