



2015 Ranger Tugs R-31

Boat Type: Trawler

Address: Chester, MD, US

Price: \$259,500



OVERVIEW

October 18th - price reduced and additional photos added !!!

This R-31S "Luxury Edition" named "Happy Ranger", was built with all the options available, and she provides an ideal platform for extended cruising while still offering the ability to be trailered to any destination on the North American continent!

SPECIFICATIONS

Basic Information

Manufacturer:	Ranger Tugs	Vessel Name:	Happy Ranger
Model:	R-31	Boat Type:	Trawler
Year:	2015	Hull Material:	Fiberglass
Category:	Power	Hull Type:	
Condition:	Used	Hull Color:	
Location:	Chester, MD, US	Designer:	
Available for sale in U.S. waters:	Yes	Flag of Registry:	

Dimensions & Weight

Length:	31 ft - 9.45 meter	Draft - max:	-
LOA:	-	Bridge Clearance:	-
Beam:	10 ft - 3.05 meter	Dry Weight:	-

Engine

Make:	Volvo	Engine Type:	Inboard
Model:	D300	Drive Type:	
Engine(s):	1	Fuel Type:	Diesel
Hours:	172	Horsepower:	-
Cruise Speed:	-	Max Speed:	-
Range:	-	Joystick Control:	No

Tank Capacities

Fuel Tank:	-	Holding Tank:	-
Fresh Water Tank:	-		

Accommodations

Total Cabins:	2	Crew Cabins:	1
Total Berths:	2	Crew Berths:	1
Total Sleeps:	1	Crew Sleeps:	1
Total Heads:	2	Crew Heads:	1
Captains Cabin:	No		

DESCRIPTIONS

Description of Happy Ranger

This R-31S "Luxury Edition" named "Happy Ranger", was built with all the options available, and she provides an ideal platform for extended cruising while still offering the ability to be trailered to any destination on the North American continent!

The foredeck offers seating and a table that can be raised or lowered depending on whether the boat is under way or at anchor, or dock, for entertaining. In addition to the foredeck seating, the R-31 boasts a larger cockpit area with wraparound seating, utilizing seats that fold out of the gunwale, and she has the cockpit ice maker. When not entertaining or underway, seats are folded leaving the cockpit unencumbered. There is a full cockpit Bimini top (folding) as well. The swim platform is where the RIB Tender is stowed, along with the Outboard.

The interior layout of the R-31S features two staterooms. The Master stateroom is forward with one large berth to Starboard, with an en-suite head. There is a Guest stateroom amidships with a double berth and day head. Those who are familiar with Ranger Tugs models will appreciate the galley layout, dinette (with reversible companion seat) and helm station that maximize the interior space. A Starboard side door, adjacent to the helm seat, provides easy access from the helm to the Starboard side deck, so the Captain can easily get to the bow for line handling.

Like all Ranger Tugs, the R-31S comes essentially turn-key rich with standard features and equipment intended to make her owner's experience hassle-free and allow for ease of handling and comfort under way.

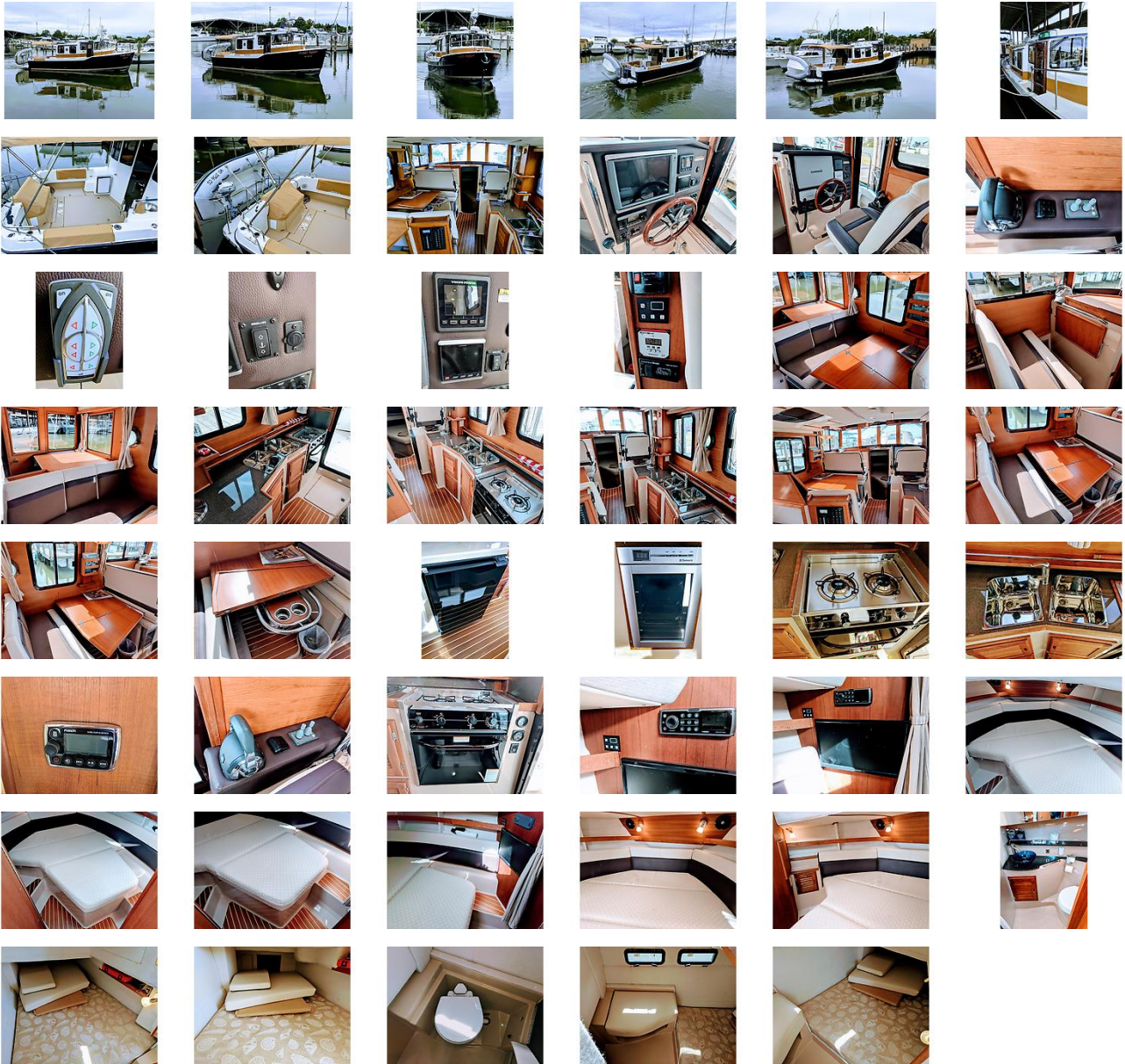
"Happy Ranger" has all of the standard equipment, including bow and stern thrusters, and the optional aft steering station. The single Volvo D4 300hp engine (with 172 hours) is designed to achieve a 15+/- knot cruise speed, if so desired. The Generator only has 71 hours of use.

Disclaimer

The Company offers the details of this vessel in good faith but cannot guarantee or warrant the accuracy of this information nor warrant the condition of the vessel. A buyer should instruct his agents, or his surveyors, to investigate such details as the buyer desires validated. This vessel is offered subject to prior sale, price change, or withdrawal without notice.**customContactInformation**

For more information or to schedule a showing, please contact the listing broker, Marc Thomas, at 410-991-0939, or yachtcaptain@comcast.net .

GALLERY



LOCATION MAP





MARC THOMAS
Bayport Yacht Sales
323 Piney Narrows Road
Chester, MD, US
Office: (410) 643-8100
Mobile: 410-991-0939
marc@bayport.biz

