



1996 Alden Downeast Flybridge

Boat Type: Motor Yacht

Address: Chester, MD, US

Price: \$349,500



OVERVIEW

"My Girl" is very fine example of the design collaboration between Alden Yachts and C. Raymond Hunt. She has always been maintained in yacht fashion by knowledgeable yachtsmen owners. She boasts great style and a great ride, which are the hallmarks of this fine Alden Yacht, built here in the US. Featuring the famous C. Raymond Hunt designed Deep-V hull design, providing unmatched offshore sea-keeping performance, and is without question a time tested and proven hull design. Only the finest craftsman and top of the line materials were used in the creation of this Alden 56. "My Girl" has benefited from continuous recent upgrades in 2015, 2016, 2017 and 2018 including some electronics, Bimini Top, interior soft goods, and a new Teak cockpit. She has just over 200 hours on the Detroit Diesels which had complete major overhauls in the fall of 2015.

SPECIFICATIONS

Basic Information

Manufacturer:	Alden	Vessel Name:	My Girl
Model:	Downeast Flybridge	Boat Type:	Motor Yacht
Year:	1996	Hull Material:	Fiberglass
Category:	Power	Hull Type:	
Condition:	Used	Hull Color:	
Location:	Chester, MD, US	Designer:	
Available for sale in U.S. waters:	Yes	Flag of Registry:	

Dimensions & Weight

Length:	56 ft - 17.07 meter	Draft - max:	-
LOA:	-	Bridge Clearance:	20 ft - 6.1 meter
Beam:	15 ft 8 in - 4.78 meter	Dry Weight:	-

Engine

Make:	Detroit Diesel	Engine Type:	Inboard
Model:	6v92 TA	Drive Type:	
Engine(s):	2	Fuel Type:	Diesel
Hours:	210	Horsepower:	625 (Individual), 1250 (combined)
Cruise Speed:	23 MPH	Max Speed:	32 MPH
Range:	-	Joystick Control:	No

Tank Capacities

Fuel Tank:	615 gallons - 1 tank(s)	Holding Tank:	-
Fresh Water Tank:	152 gallons - 1 tank(s)		

Accommodations

Total Cabins:	3	Crew Cabins:	1
Total Berths:	1	Crew Berths:	1
Total Sleeps:	1	Crew Sleeps:	1
Total Heads:	2	Crew Heads:	1
Captains Cabin:	No		

DESCRIPTIONS

Vessel Information

Interior Description

The interior of "My Girl" is beautifully finished with matched grain cherry wood, recent soft goods, including window

treatments, and custom lighting. From the spacious cockpit with new Teak decking, one enters the main saloon, which features an "L" shaped settee to Starboard and upholstered swivel chairs to Port, with the entertainment cabinet between. Forward of the settee is the interior helm station to Starboard, with full controls and comfortable helm seat. To Port is a desk with storage under.

Forward and down the stairs to Port is a spacious U-Shaped Galley that is lit overhead by natural light. Forward of the galley is the recently new stacked washer & dryer. To Starboard is a guest cabin with over & under berths, hanging locker and plenty of storage. Forward is the en-suite head, that shares a large shower stall with the Master Stateroom head. To Port is the second guest stateroom with over & under berths, hanging locker and more storage. The Master Stateroom is all the way forward with a center line Queen berth with ample storage and hanging lockers.

Galley

Large U-shaped with Force 10 propane stove and oven and custom wood tray as cover. Tappan microwave oven above. Norcold refrigerator and a Norcold chest freezer concealed under the forward counter top. Custom food warmer with stainless heat shield.

Recent Upgrades and Improvements

- Complete Engine Rebuilds – 210 hours (as of 9/2018) on 6V92 DDEC @625HP
- Replaced many pumps and hoses
- Garmin 7612 GPS Units - at both upper & lower helms
- Interior soft goods and cushions
- Window Treatments and Draperies
- Teak Cockpit Decking
- Pumps and switches for A/C Sump
- Bimini top and enclosure
- Fly bridge cushions
- Painted Hull
- Removed rudders, cleaned housings and repacked with Flex Pack
- Reconditioned props
- Props Painted w/ Prop Speed
- Xantrex 2,500 watt Inverter / Charger
- Battery Charger
- Hot water heater
- Main engine raw water intake Sea cocks
- Generator raw water intake Sea cock
- Underwater Lights
- Cutlass Bearings
- Shaft Sharks
- Batteries

Electronics

Lower Helm:

- Garmin 7612 GPS Map
- Raymarine VHF
- Bow Thruster by Side Power
- Detroit Diesel Electronic Controls
- Compass
- Raytheon Ray Pilot 650 Autopilot
- Bennett Trim Tab Indicator

Upper Helm:

- Garmin 7612 GPS Map
- Raymarine C120 GPS Chartplotter

- Raymarine Depth Gauge
- Furuno DGPS GP-37
- Raymarine Ray Chart 601XX
- Raytheon Ray Pilot 650 Autopilot Master at Upper Helm
- Standard Horizon VHF with Hailer
- Bow Thruster - Side Power
- Detroit Diesel Electronic Controls
- Bennett Trim Tab Indicator
- Compass

Electrical

Northern Lights 12kw generator with 1,415 hours; House battery power supplied by four 8-D AGM batteries; Engine starting circuits are powered by an 8-D AGM battery for each engine, with dedicated 90 amp hour alternators for each. Dual switching system permits independent selection of battery bank for engine starting or ship operation.

- AC system, 3 wire galvanic protected ground, 220 volt, 50 amp.
- 40 amp battery charger.
- (2) 50' shore power cords
- Xantrex 2,500 watt Inverter / Charger.
- TV and telephone shore service.

Deck

The large cockpit has a new Teak sole, with a large single hatch leading to a cavernous Lazarette. Sculpted Teak steps lead to wide side decks protected by SS stanchions and lifelines. Inward opening transom door leads to wide, fiberglass swim platform. Along the side decks are four properly placed stainless roller chocks to accommodate spring lines. Oversized fore and aft chocks are integral with toe rail. Foredeck features Lewmar Ocean 2 dual direction windlass with 200' chain which can be controlled from the Flybridge. The chain locker is accessible from a hatch on the foredeck, but it is and separated from the rest of the boat by a watertight bulkhead. There are eight Bomar opening ports with screens, custom recessed into deckhouse, and eight Lewmar Ocean series overhead hatches, all with new covers. Additional ventilation is supplied through two Varnished teak Dorade boxes. Flybridge has port and starboard settees with storage under. Two Pompanette Model AS21 (17") seats serve the helmsman and companion. Norcold refrigerator installed forward on port side. Bimini and full enclosure is custom fitted over the stainless steel arch for a clean, uncluttered look. Kalhenberg Model S-O Air horn with white powder coat finish. All trim is varnished high gloss teak.

Mechanical/Plumbing

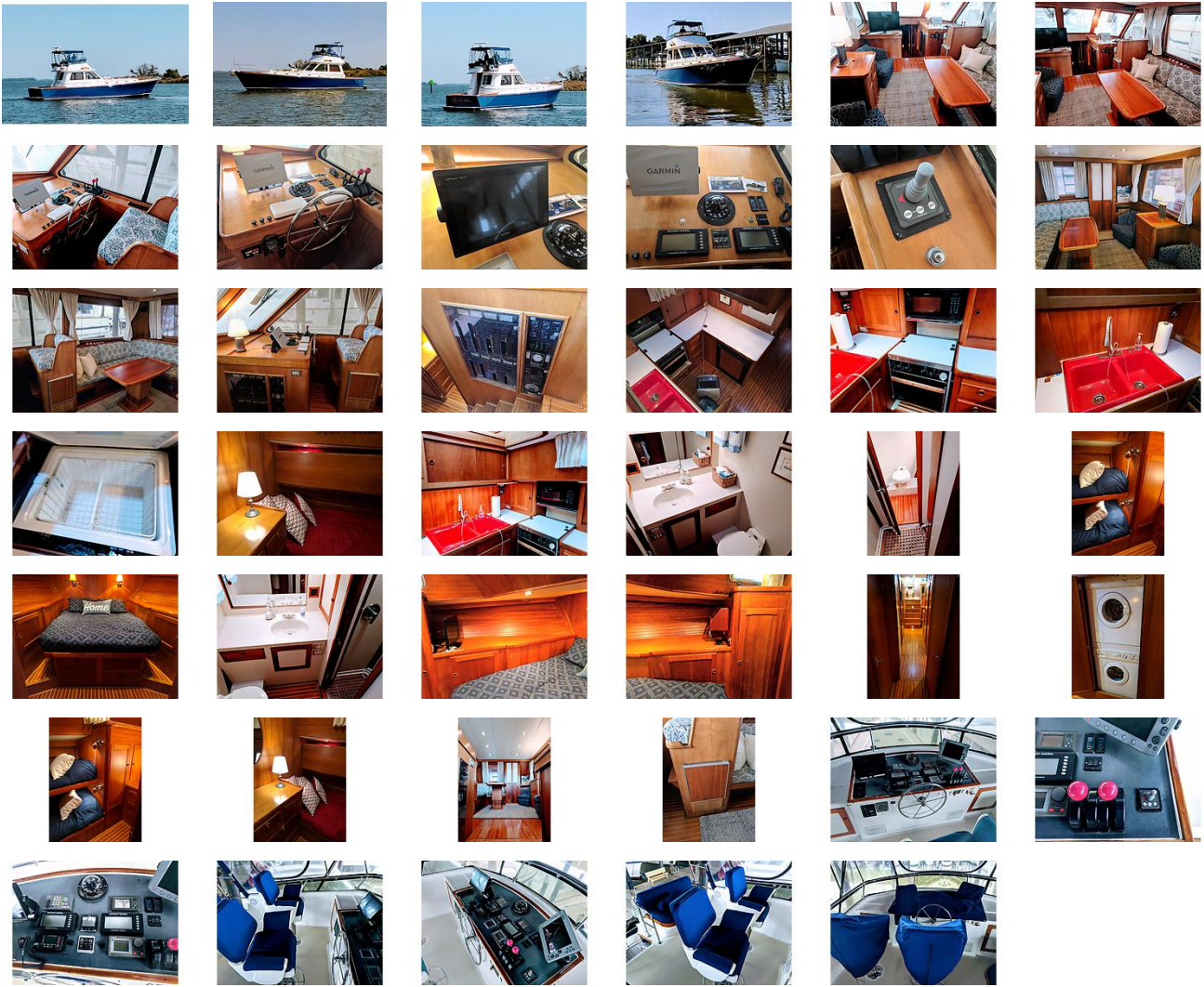
Twin Detroit 6V92/TA DDEC with dual station controls. Oil change system has reverse function for both emptying and filling oil sumps in main engines and generator. Engine panel is all electric including gauges for RPM, oil pressure, voltage, temp, and audible alarm for over temp and low oil pressure. Shafts are 2 1/2 " Aquamet 22. Through PSS Shaft seals. Single lever electronic controls. Hynautic hydraulic power steering system. Twin Racor fuel filters with selection valves. Mylar/foam/lead insulation. 4 Bennett Marine trim tabs. Automatic fire extinguishing system. Sidepower 7 hp bow thruster. Sealand Vacuflush head system. "Marine Air" air conditioning system with three 16,000 BTU reverse cycle units, and the Master Stateroom unit was new in September of 2017. Northern Lights 12 KW generator with 1,415 hours. Two stainless steel water tanks. Groco Paragon Senior water pressure pump with PST-3 accumulator tank. 20 gal. Stainless steel Hot water tank. Three electric Rule bilge pumps 3700 GPH each. Deck wash down with fresh/salt selector. Hot and cold cockpit shower. All plumbing lines and thru hull labeled as to function. Holding tank discharge pump with macerator.

Disclaimer

The Company offers the details of this vessel in good faith but cannot guarantee or warrant the accuracy of this information nor warrant the condition of the vessel. A buyer should instruct his agents, or his surveyors, to investigate such details as the buyer desires validated. This vessel is offered subject to prior sale, price change, or withdrawal without notice.**customContactInformation**

For more information or to schedule a showing, please contact Marc Thomas at 410-991-0939 or email at yachtcaptain@comcast.net

GALLERY



LOCATION MAP





MARC THOMAS
Bayport Yacht Sales
323 Piney Narrows Road
Chester, MD, US
Office: (410) 643-8100
Mobile: 410-991-0939
marc@bayport.biz

